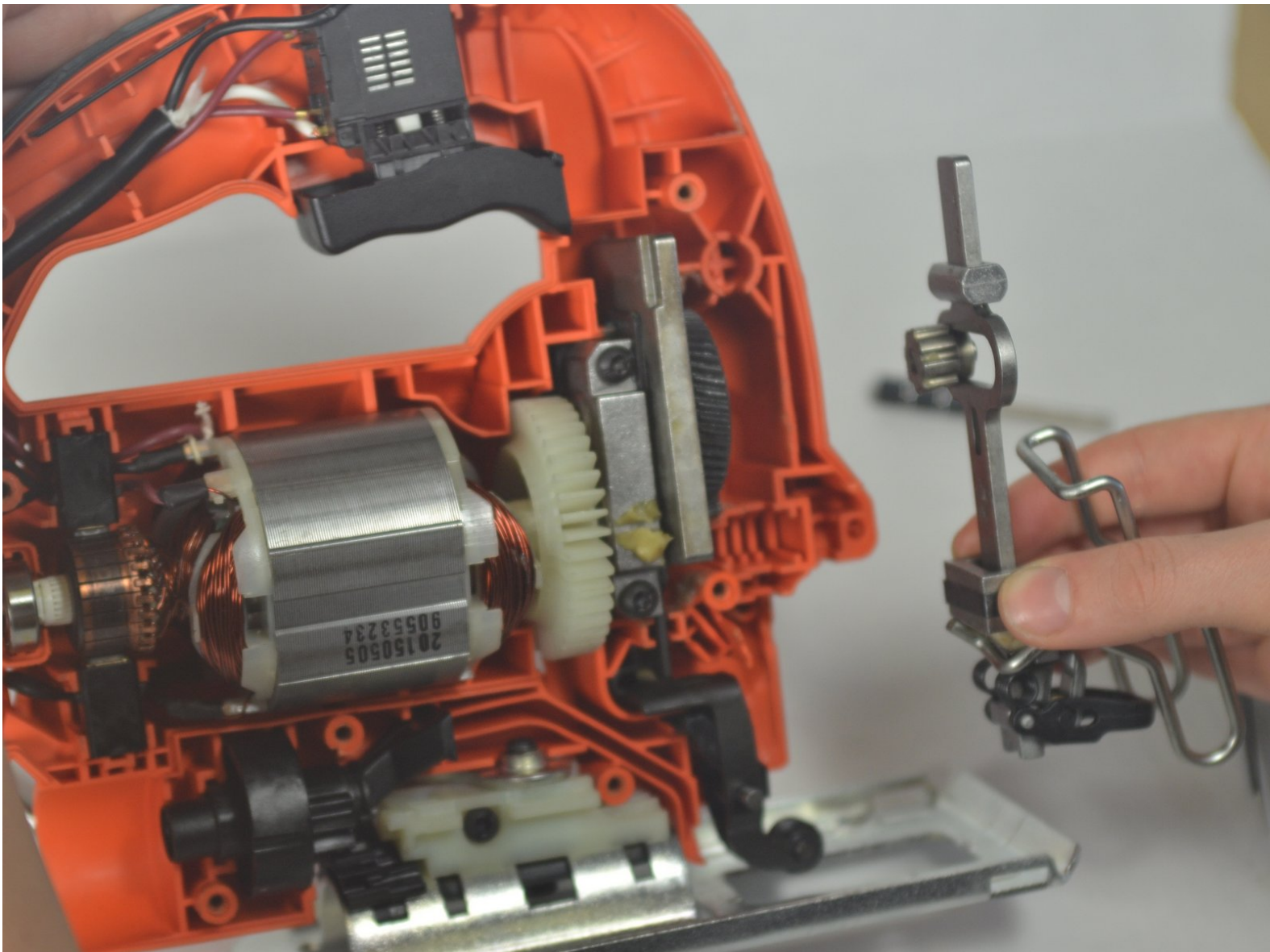




# Black and Decker JS660 Blade Holder Replacement

Written By: matt murray



## INTRODUCTION

This guide will show you how to remove the entire blade holder assembly if it were to ever get broken.



### TOOLS:

- [T15 Torx Screwdriver](#) (1)



### PARTS:

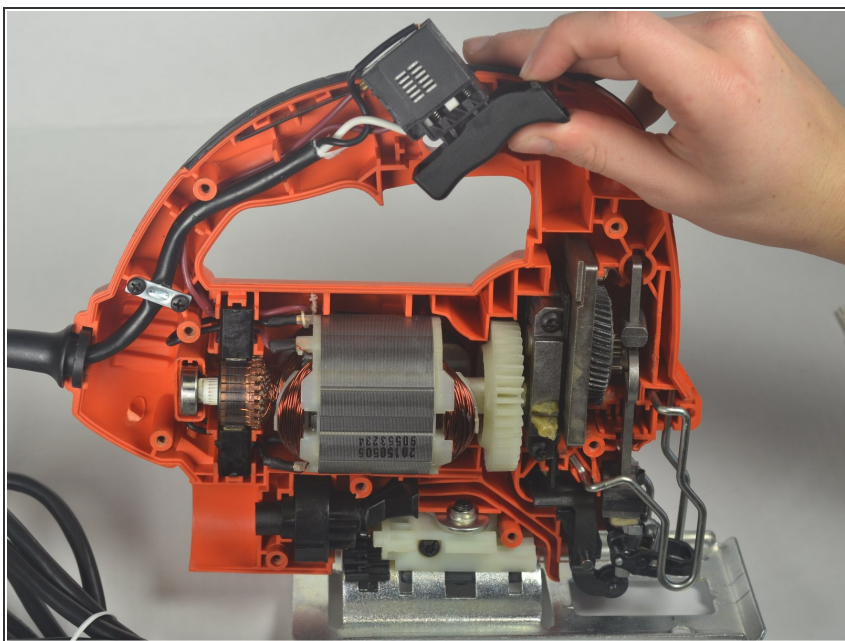
- [Blade Holder](#) (1)

## Step 1 — Housing Disassembly



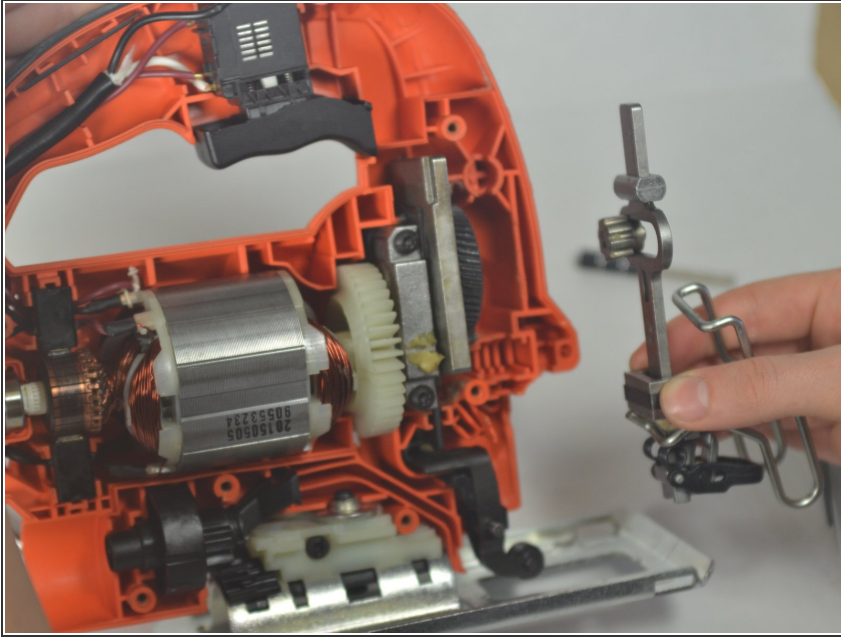
- Remove the nine torx 15.875mm screws on the front of the jigsaw using a T-15 torx screwdriver.

## Step 2



- By separating the two housing halves, carefully remove the top plate.

## Step 3 — Blade Holder



- Being careful to keep all parts together, grab the entire assembly and pull it directly out of the saw.

To reassemble your device, follow these instructions in reverse order.